



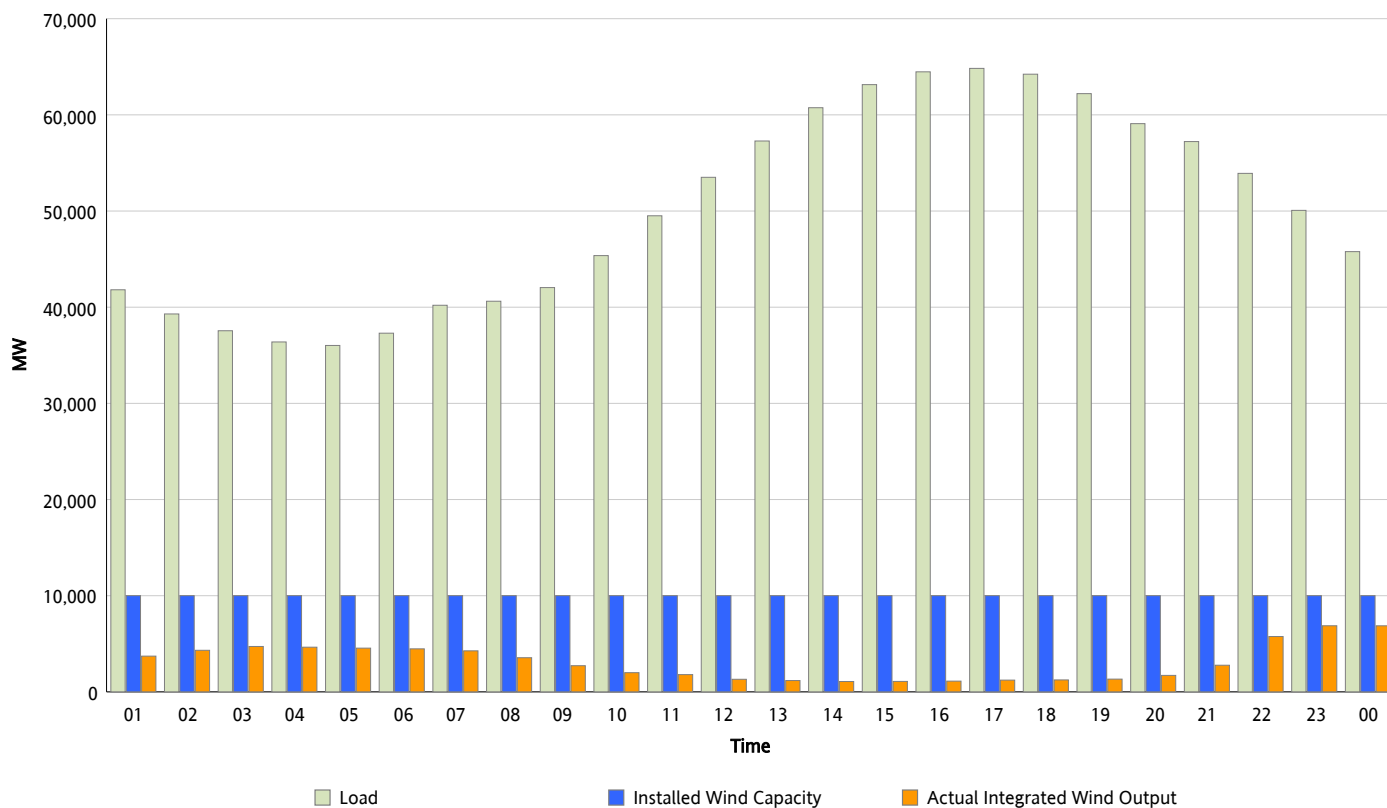
ERCOT Grid Operations

Wind Integration Report : 09/07/2012

Peak Load	64,831 MW
Load Peak Hour (HE)	17
Wind Over Peak	1,221 MW
Wind Record 06/19/12	8,368 MW
Max Wind Value*	7,297 MW
Wind Peak Time	22:00
Wind Integration %	14.03 %

Hourly Average Actual Load vs. Actual Wind Output

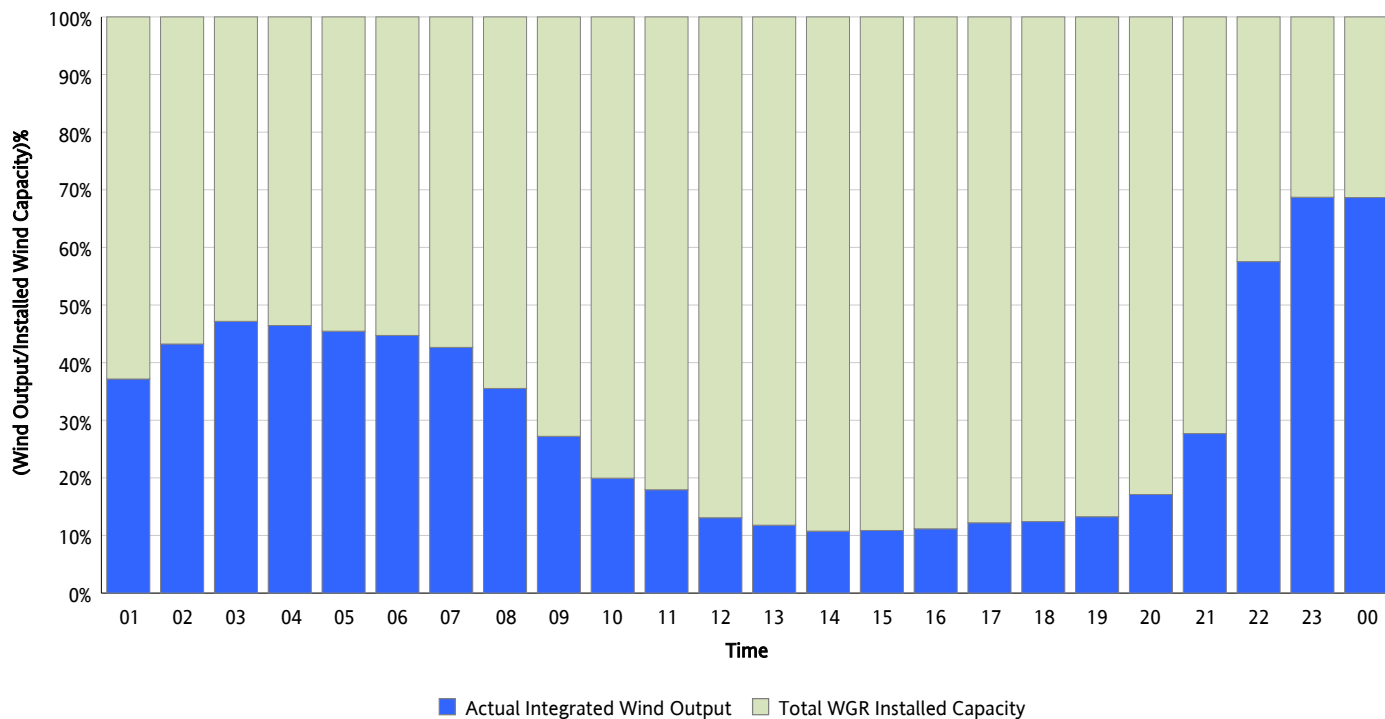
09/07/2012



* Wind Record and Wind Max represent instantaneous values and the rest of the values are integrated over the hour

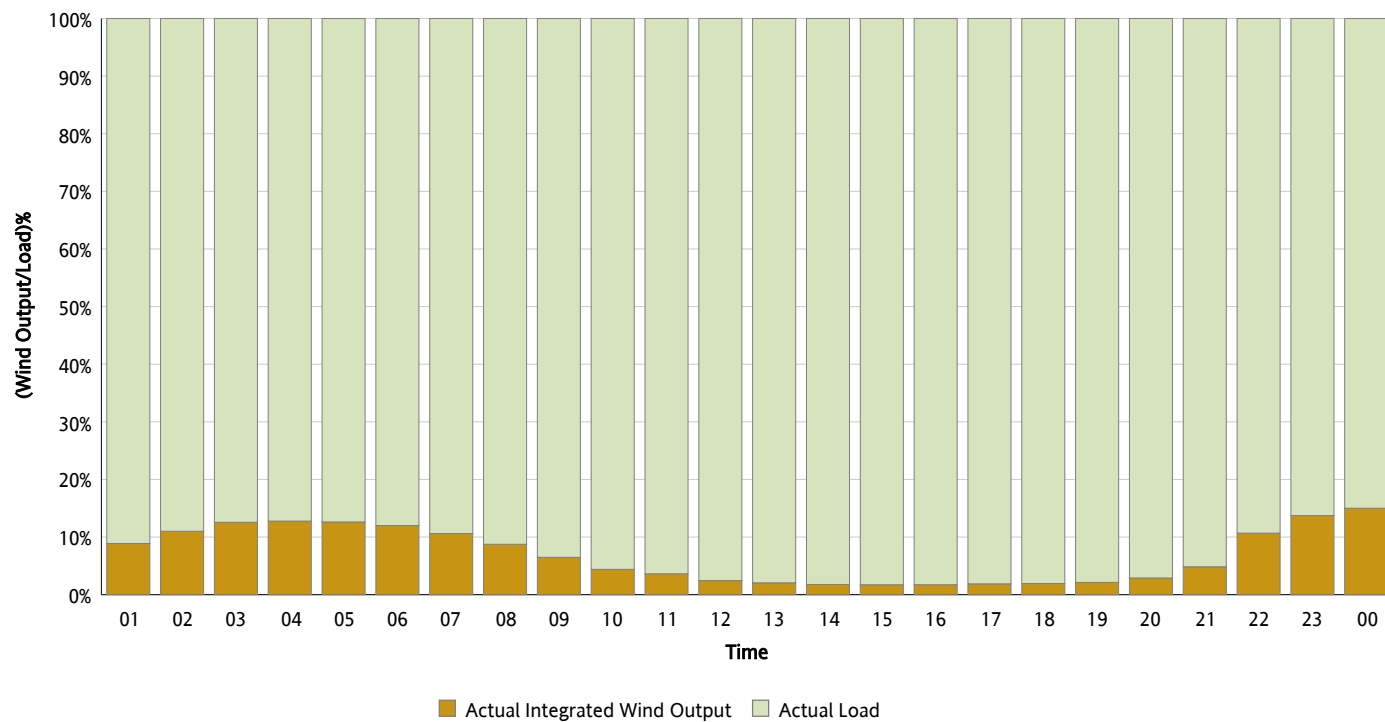
Actual Wind Output as a Percentage of the Total Installed Wind Capacity

09/07/2012



Actual Wind Output as a Percentage of the ERCOT Load

09/07/2012



ERCOT Load vs. Actual Wind Output

08/31/2012 - 09/07/2012

